

## COLORI ACCIAIO PREVERNICIATO

Prepainted steel colours  
Farben vorlackierter Stahl  
Coloris acier pré-laqué  
Colores acero prelacado

### COLORI STANDARD

Standard colours, Standardfarben, Coloris standard, Colores estándar

\* simile al \* similar to

\* simile al \* similar to



**Bianco traffico \*\***  
Traffic white  
Verkehrsweiß  
Blanc signalisation  
Blanco tráfico

**RAL 9016 \* | M 1326**



**Avorio chiaro**  
Light ivory  
Hellelfenbein  
Ivoire clair  
Marfil claro

**RAL 1015 \* | M 1320**



**Blu genziana**  
Gentian blue  
Enzianblau  
Blue gentiane  
Azul genciana

**RAL 5010 \* | M 7301**



**Marrone seppia**  
Sepia brown  
Sepiabraun  
Brun sépia  
Sepia

**RAL 8014 \* | M 5311**



**Bianco puro \*\***  
Pure white  
Reinweiß  
Blanc pur  
Blanco puro

**RAL 9010 \* | M 13124**



**Giallo navone**  
Rape yellow  
Rapsgelb  
Jaune colza  
Amarillo colza

**RAL 1021 \* | M 3318**



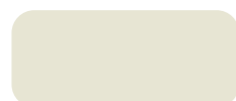
**Verde muschio**  
Moss green  
Moosgrün  
Vert mousse  
Verde musgo

**RAL 6005 \* | M 6301**



**Alluminio grigiastro**  
Grey aluminium  
Graualuminium  
Aluminium gris  
Aluminio gris

**RAL 9007 \* | M 9306**



**Bianco grigiastro**  
Grey white  
Grauweiß  
Blanc gris  
Blanco grisáceo

**RAL 9002 \* | M 1305**



**Rosso fuoco**  
Flame red  
Feuerrot  
Rouge feu  
Rojo vivo

**RAL 3000 \* | M 4305**



**Grigio antracite**  
Anthracite grey  
Anthrazitgrau  
Gris anthracite  
Gris antracita

**RAL 7016 \* | M 2305**



**Grigio metallizzato**  
Metallic gray  
Weißaluminium  
Aluminium blanc  
Aluminio blanco

**RAL 9006 \* | M 9302**

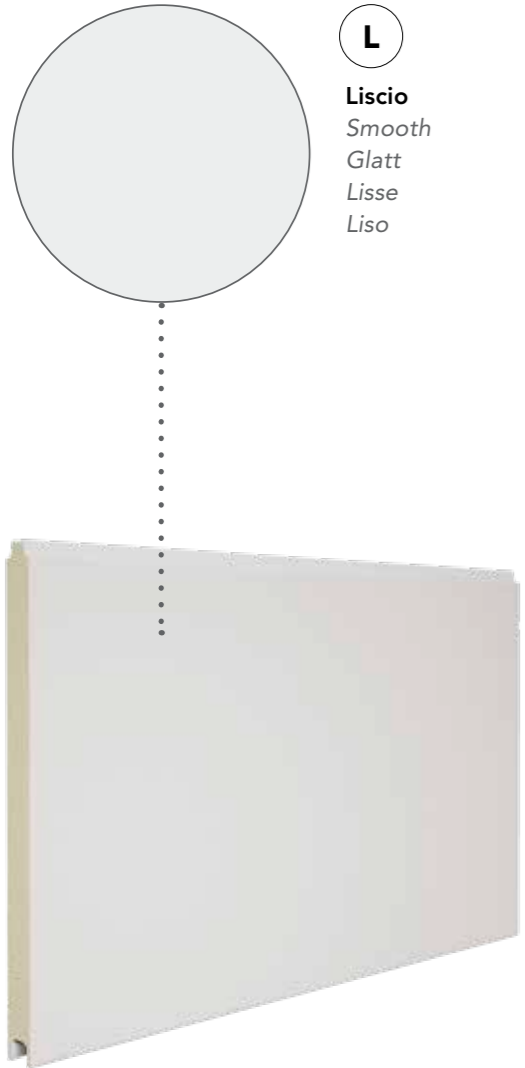
\*\* Per i supporti metallici interni viene utilizzato il colore Bianco england RAL 9010 / M13226  
\*\* For internal metal supports is used england White color RAL 9010 / M13226

## FINITURE SUPERFICIALI

Surface finish  
Oberflächenfinishs  
Finitions superficielles  
Acabados superficiales

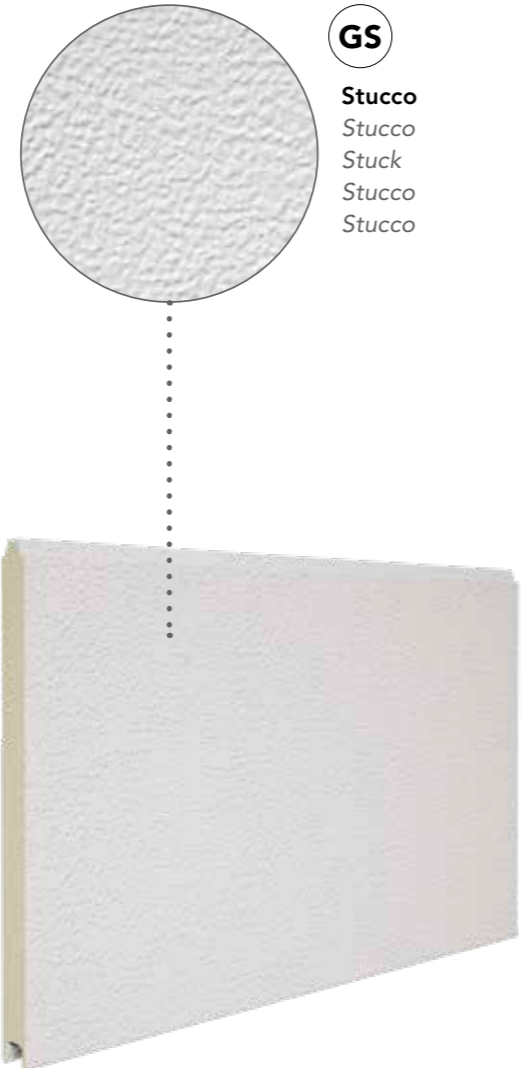
**L**

**Liscio**  
Smooth  
Glatt  
Lisse  
Liso



**GS**

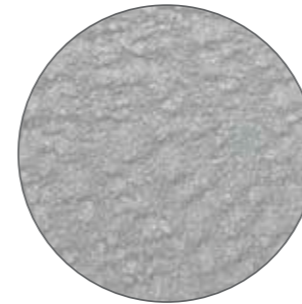
**Stucco**  
Stucco  
Stuck  
Stucco  
Stucco



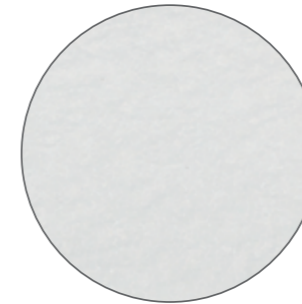
## RIVESTIMENTI PREVERNICIATI SPECIALI

Special pre-coated panels  
Spezielle vorlackierte Beschichtungen  
Panneaux spéciaux pré-enrobés  
Revestimientos prebarnizados especiales

\* simile al \* similar to



**RAL 9006 \* • M 9151**  
**alluminio brillante**  
white aluminium



**RAL 9016 \* • M 1151**  
**bianco traffico**  
traffic white



**RAL 9016 \* • M 11294**  
**bianco traffico**  
traffic white

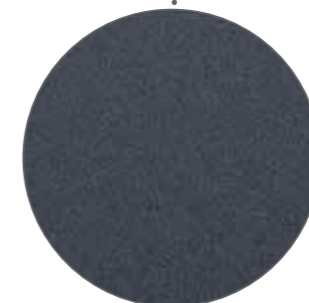


SHIMOCO

CORTEN

POLYGRAIN

SKYWALL



**RAL 7016 \* • M 21104**  
**grigio antracite**  
anthracite grey

## RIVESTIMENTI PREVERNICIATI HIGH QUALITY "WOODEN PATTERN"

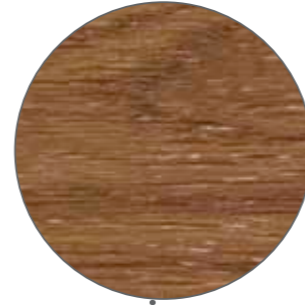
Pre-painted coating "Wooden pattern"  
 Vorlackierung "Wooden pattern"  
 Revêtement pré-laqués "Wooden pattern"  
 Revestimiento prelacado "Wooden pattern"



**Noce chiaro**  
 Light walnut  
 Hellem Walnussholz  
 Noyer clair  
 Nogal claro



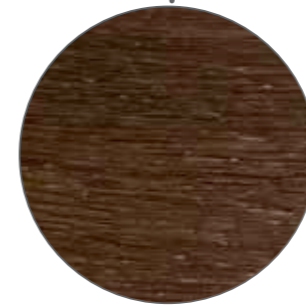
**Noce scuro**  
 Dark walnut  
 Dunkles Walnussholz  
 Noyer foncé  
 Nogal oscuro



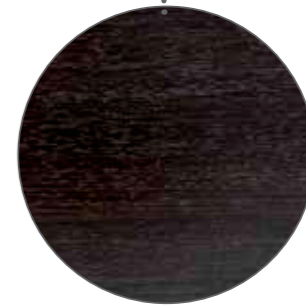
**Rovere chiaro**  
 Golden oak  
 Eiche Hell  
 Chêne clair  
 Roble claro



**Mogano**  
 Mahogany  
 Mahagoni  
 Acajou  
 Caoba



**Rovere scuro**  
 Dark oak  
 Eiche Dunkel  
 Chêne foncé  
 Roble oscuro



**Rovere rustico**  
 Country oak  
 Rustikale Eiche  
 Chêne rustique  
 Roble rústico