



all the colours of building

 **MARCEGAGLIA**


IT - EN

SOLUZIONI PER IL TAMPONAMENTO METALLICO

Metal building envelope solutions

Marcegaglia RWD è in grado di offrire al mercato un'ampia gamma di **pannelli coibentati per tetti, pareti** e pannelli coibentati per applicazioni speciali quali: celle frigorifere (pannelli frigo), pannelli fonoassorbenti, pannelli isolanti copertura coppo.

Marcegaglia RWD offers to the market a wide range of **insulated panels for roofs, wall sectional doors** and insulated panels for special applications such as: fridge panels, sound-absorbing panels, coppo insulating roofing panels.



PANNELLI COIBENTATI PER COPERTURA

INSULATED ROOFING PANELS

MB ROOF

Pannelli copertura in poliuretano / *Polyurethane roofing panels*

TD5



spessore pannello panel thickness	supporto esterno/interno external/internal support
30 ÷ 150 mm	acciaio/acciaio - steel/steel
30 ÷ 100 mm	alluminio/alluminio - aluminium/aluminium



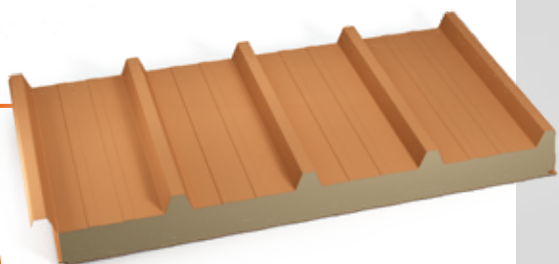
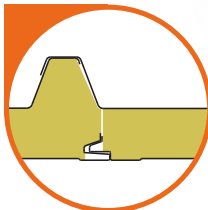
MB FIRE-PRO ROOF

Pannelli copertura in lana di roccia / *Mineral wool roofing panels*

MTD



spessore pannello panel thickness	supporto esterno/interno external/internal support
50 ÷ 200 mm	acciaio/acciaio - steel/steel

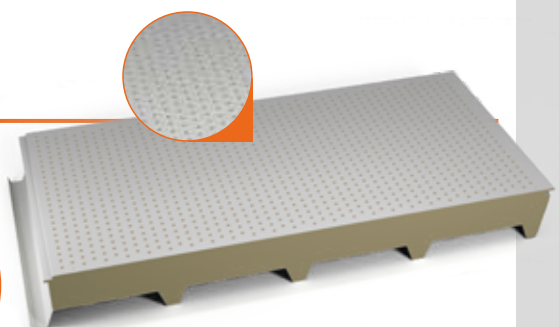
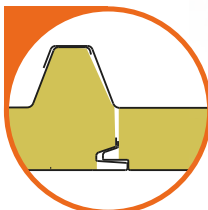


MB ROOF SOUND

Pannelli copertura fonoassorbente / *Sound-absorbing roofing panels*

FTD

spessore pannello panel thickness	supporto esterno/interno external/internal support
50 ÷ 150 mm	acciaio/acciaio - steel/steel



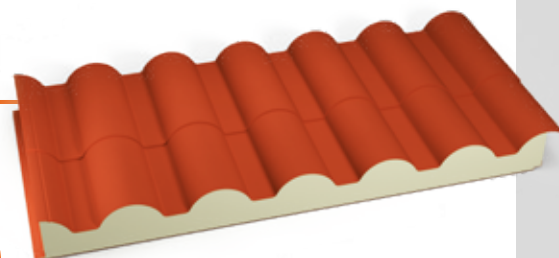
MB COPPO

Pannelli copertura coppo / *Tile roofing panels*

TCP



spessore pannello panel thickness	supporto esterno/interno external/internal support
40 ÷ 100 mm	acciaio/acciaio - steel/steel
40 ÷ 100 mm	alluminio/alluminio - aluminium/aluminium



PANNELLI COIBENTATI PER PARETE

INSULATED WALL PANELS

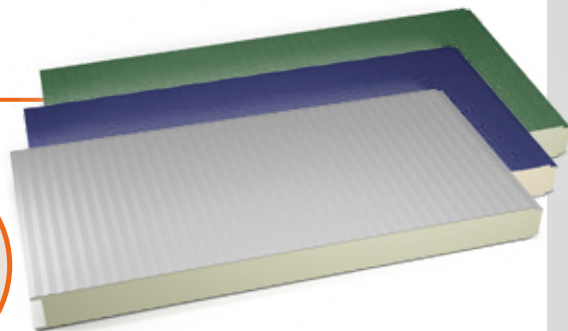
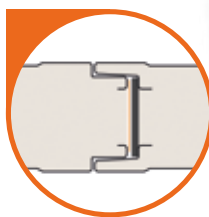
MB WALL

Pannelli parete in poliuretano / *Polyurethane wall panels*

PR2 - PDD - PSS



spessore pannello panel thickness	supporto esterno/interno external/internal support
25 ÷ 150 mm	acciaio/acciaio - steel/steel
25 ÷ 100 mm	alluminio/alluminio - aluminium/aluminium



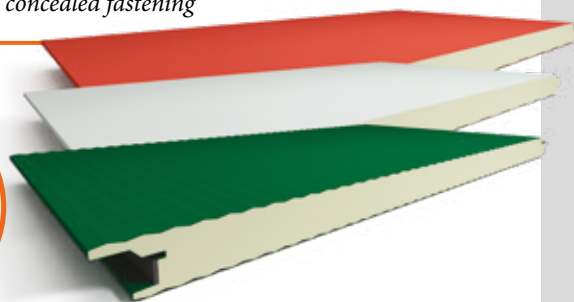
MB HIDDEN FIX

Pannelli parete in poliuretano a fissaggio nascosto / *Polyurethane wall panels with concealed fastening*

PDF - PFV - PLF



spessore pannello panel thickness	supporto esterno/interno external/internal support
50 ÷ 150 mm	acciaio/acciaio - steel/steel
50 ÷ 120 mm	alluminio/alluminio - aluminium/aluminium



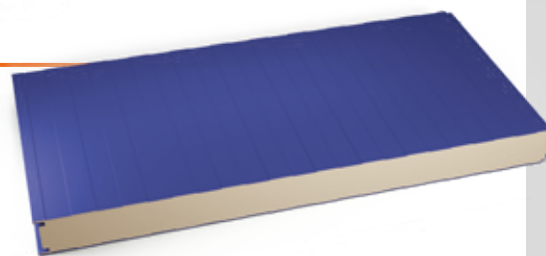
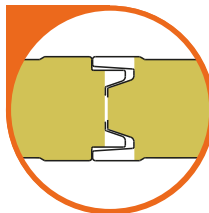
MB FIRE-PRO WALL

Pannelli parete in lana di roccia / *Rock wool wall panels*

MDD



spessore pannello panel thickness	supporto esterno/interno external/internal support
50 ÷ 200 mm	acciaio/acciaio - steel/steel



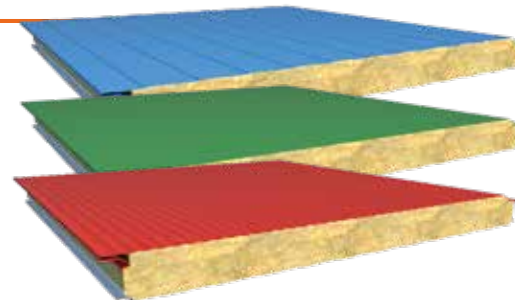
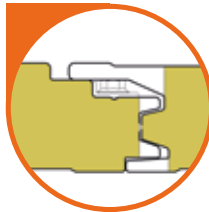
MB FIRE-PRO HIDDEN FIX

Pannelli parete in lana di roccia a fissaggio nascosto / *Rockwool/mineral wool insulated wall panels with concealed fixing joint system*

MDF - MLF - MSF



spessore pannello panel thickness	supporto esterno/interno external/internal support
50 ÷ 200 mm	acciaio/acciaio - steel/steel





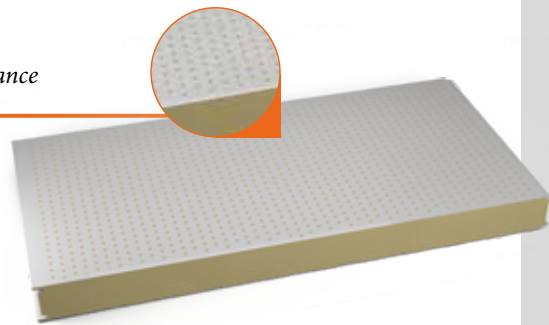
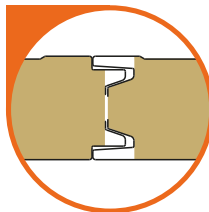
MB WALL SOUND

Pannelli parete fonoassorbente / Sound-absorbing wall panels with acoustic performance

FDL

spessore pannello panel thickness	supporto esterno/interno external/internal support
50 ÷ 200 mm*	acciaio/acciaio - steel/steel

*sagoma per ermeticità migliorata per spessori 180 e 200 mm
*shaped for improved airtightness for thicknesses 180 and 200 mm



PANNELLI BILAMIERA PER CAMERE FREDDHE

MB COLD-PRO

SANDWICH PANELS FOR COLD ROOMS



MB COLD-PRO

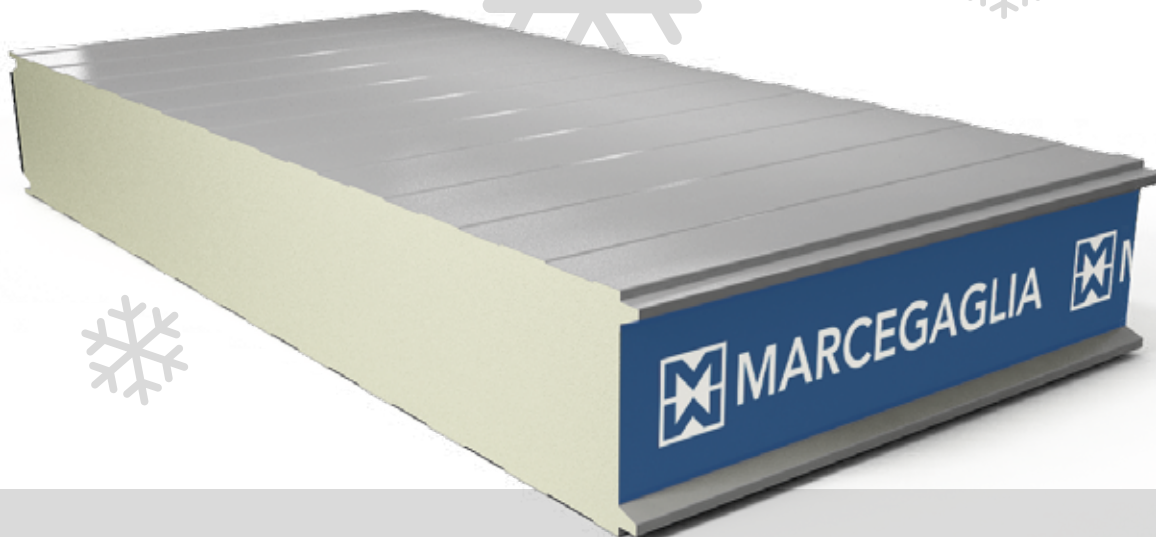
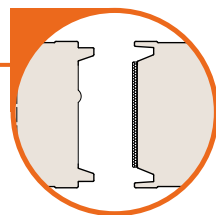
Pannelli bilamiera per camere fredde / Sandwich panels for cold rooms

PFD - PFL

CE

spessore pannello panel thickness	supporto esterno/interno external/internal support
100 ÷ 200 mm*	acciaio/acciaio - steel/steel

*sagoma per ermeticità migliorata per spessori 180 e 200 mm
*shaped for improved airtightness for thicknesses 180 and 200 mm



PANNELLI COIBENTATI MONOLAMIERA

MB ROOF MONO

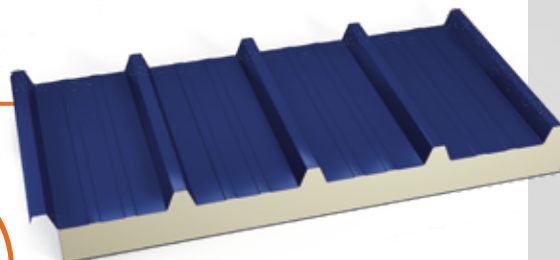
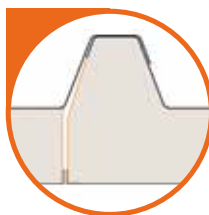
SINGLE SHEET INSULATED PANELS

MB ROOF MONO

Pannelli copertura monolamiera / *Single sheet roofing panels*

TK5 AC

spessore pannello panel thickness	supporto esterno/interno external/internal support
15 ÷ 150 mm	acciaio/acciaio - steel/steel
	alluminio/alluminio - aluminium/aluminium

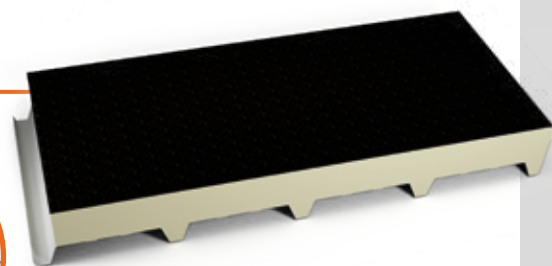


MB ROOF MONO

Pannelli copertura deck / *Deck roofing panels*

TK5 CF

spessore pannello panel thickness	supporto esterno/interno external/internal support
15 ÷ 150 mm	acciaio/acciaio - steel/steel

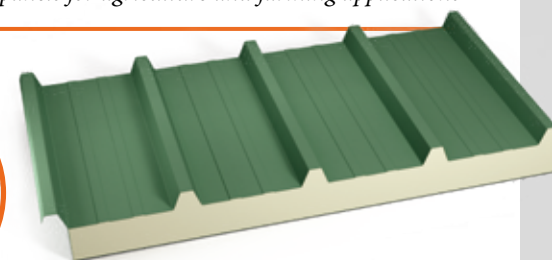
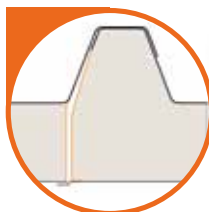


MB ROOF MONO

Pannelli copertura in vetroresina per utilizzo agro-zootecnico / *Fiberglass roofing panels for agriculture and farming applications*

TK5 VR

spessore pannello panel thickness	supporto esterno/interno external/internal support
30 ÷ 100 mm	acciaio/acciaio - steel/steel
	alluminio/alluminio - aluminium/aluminium

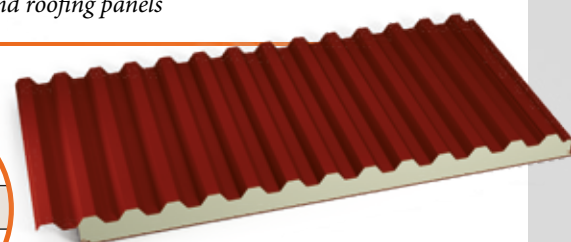
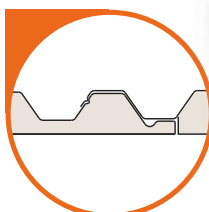


MB ROOF MONO

Pannelli monolamiera per rivestimento di pareti e coperture / *Single sheet wall and roofing panels*

K13

spessore pannello panel thickness	supporto esterno/interno external/internal support
10 mm	acciaio/acciaio - steel/steel
	alluminio/alluminio - aluminium/aluminium



SPECIFICHE TECNICHE

Technical specifications

SUPPORTI

Metallic supports

Acciaio zincato Sendzimir EN 10143 ed EN 10346 con qualità S250GD

Sendzimir galvanized steel according to EN 10143, EN 10346, S250GD grade

Preverniciati EN 10169 (Coil Coating) in base alle norme ECCA ed EURONORME:

Pre-painted steel according to EN 10169 (coil coating) and to ECCA norms and EURONORMS:

di produzione normale:

- con rivestimento MP3 poliesteri

standard production:

- with MP3 polyester coating

di produzione speciale:

- con rivestimento MP5 poliesteri modificati/poliuretanic
- con rivestimento MP10 fluorocarbonici
- con rivestimento MP20 poliuretanic/poliamidici (Certificato C5-I e C5-M)
- con rivestimento MPHR

special production:

- with MP5 modified polyester/polyurethane coating
- with MP10 fluorocarbon coating
- with MP20 polyurethane/polyamide coating (Certificate C5-I e C5-M)
- with MPHR coating

Acciaio zincato plastificato EN 10346

Plastic coated, galvanized steel EN 10346

Alluminio naturale, preverniciato EN 485-2, EN 573-3, EN 11396

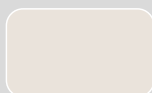
Natural, pre-painted aluminium EN 485-2, EN 573-3, EN 11396

Acciaio Inox EN 1172, EN 1173, EN 1412

Stainless steel EN 1172, EN 1173, EN 1412

COIBENTAZIONE

Insulation



poliuretano
polyurethane



lana di roccia
mineral wool

Sono utilizzate **formulazioni poliuretaniche** che producono schiume isolanti anigrosopiche, antimuffa e ad alto contenuto di celle chiuse (>95%).

Per le richieste di prestazione al fuoco, possono essere impiegate schiume con reazione al fuoco particolarmente performanti.

We use **polyurethane products** that are capable of producing waterproof, mold-resistant insulating foams with a high percentage of closed cells (>95%).

High-performance reactive fire resistant foams are available when greater fire resistance is required.

Conducibilità termica λ : 0,022 W/mK

Thermic conductivity λ : 0,022 W/mK

Densità media totale: 38 kg/m³ ± 10%

Overall average density: 38 kg/m³ ± 10%

Le **lane di roccia** impiegate sono di tipo biosolubile, anigrosopico, inimprescibili e incombustibili (classe A1 europea di reazione al fuoco)

We use **mineral wool** that is biosoluble, waterproof, rot proof, and fire resistant (European Fire Resistance Rating A1)

Conducibilità termica

λ : 0,041 W/mK
(correttamente misurata nella direzione delle fibre)

Thermic conductivity

λ : 0,041 W/mK (correctly measured in the fiber direction)

Densità media totale: 100 kg/m³ ± 10%

Overall average density: 100 kg/m³ ± 10%

ACCIAIO AL CARBONIO PREVERNICIATO sec. EN 10169 PRE-PAINTED CARBON STEEL according to EN 10169

top a finire - finishing top coat

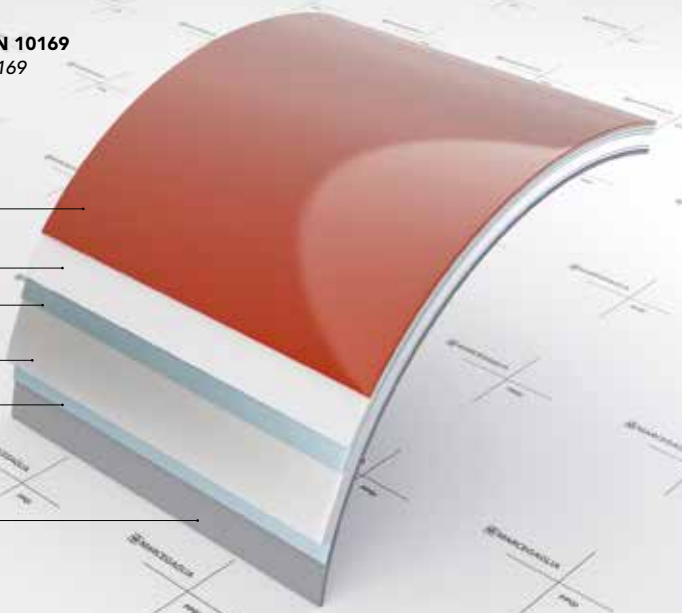
primer

trattamento chimico - chemical treatment

acciaio zincato - galvanized steel

trattamento chimico - chemical treatment

back coat



Gamma principali colori

Main colour range

* simile al * similar to

 avorio chiaro light ivory RAL 1015 *	 grigio metallizzato metallic grey RAL 9006 *
 blu genziana gentian blue RAL 5010 *	 bianco puro pure white RAL 9010 *
 verde muschio moss green RAL 6005 *	 bianco grigio grey white RAL 9002 *
 verde reseda reseda green RAL 6011 *	 testa di moro dark brown RAL 8014 *
 grigio antracite anthracite grey RAL 7016 *	 rosso Siena "Siena" red RAL 3009 *
 grigio ombra umbra grey RAL 7022 *	 rosso tegola tile red
 grigio luce light grey RAL 7035 *	

Rivestimenti con finiture speciali

Special finish coatings

 Coppo anticato scuro Coppo antique dark	 Finto legno perlinato ciliegio Wooden pattern cherry woodboard
 Coppo anticato chiaro Coppo antique light	 Finto legno noce scuro Wooden pattern dark walnut
 Coppo siracusano Syracusan coppo	 Finto legno noce chiaro Wooden pattern light walnut
 PVC Plus bianco PVC Plus white RAL 9010 *	 Corten pattern Corten pattern
 PET bianco Pet white RAL 9010 *	

Principali sistemi vernicianti

Main painting systems

MP3
MP5
MP10
MP20
MPSH
PVC PLUS
MPWI
CORTEN

Su richiesta è possibile concordare una combinazione personalizzata di qualità del materiale zincato e dei cicli vernicianti su entrambe le facce

Upon request, a customized combination of galvanized materials and painting cycles can be arranged on both sides



 **MARCEGAGLIA**
RWD

RWD SANDWICH PANELS

rwdsandwichpanels@marcegaglia.com

www.marcegagliarwd.com

Main office and plant:

Strada Roveri 4 • 15068 Pozzolo Formigaro (AL) - Italy
phone + 39 0143 7761

Registered seat:

via Bresciani 16,
46040 Gazoldo degli Ippoliti (MN) - Italy